

Diagnostic Pitfalls of Eccrine Porocarcinoma with Extensive Squamous Differentiation

Jung SJ¹, Kim KB¹, Lee SJ¹, Kim AR¹, Choi KU¹, Bae YC² and Lee CH^{1*}

¹Department of Pathology, Pusan National University School of Medicine, Busan, Korea

² Department of Plastic and Reconstructive Surgery, Pusan National University School of Medicine, Busan, Korea

*Corresponding author:

Chang Hun Lee,
Department of Pathology, Pusan National
University School of Medicine, 179
Gudeok-ro, Seo-gu, Busan 49241,
Republic of Korea, Tel: +82-51-240-7718,
Fax: +82-51-242-7422,
E-mail: cnlee@pusan.ac.kr

Received: 27 Mar 2021

Accepted: 12 Apr 2021

Published: 17 Apr 2021

Copyright:

©2021 Lee CH. This is an open access article distributed under the terms of the Creative Commons Attribution License, which permits unrestricted use, distribution, and build upon your work non-commercially.

Citation:

Lee CH. Diagnostic Pitfalls of Eccrine Porocarcinoma with Extensive Squamous Differentiation. *Ann Clin Med Case Rep.* 2021; V6(12): 1-4.

Abbreviations:

EMA: Epithelial Membrane Antigen; BCL2: B-cell Lymphoma 2; CEA: Carcinoembryonic Antigen; CD117: CLuster of Differentiation 117; HMB45: Human Melanoma Black 45; PAS: Periodic Acid-Schiff; PET-CT: Positron Emission Tomography-Computed Tomography; CK19: Cytokeratin 19

Keywords:

Eccrine porocarcinoma; Squamous metaplasia; Differential diagnosis; Case report

Authors' Contributions:

Lee CH, Jung SJ, Kim KB, Lee SJ, Kim AR, Choi KU. All the authors are contributed equally to this article.

1. Abstract

1.1. Background: Eccrine porocarcinoma is an extremely rare malignant skin tumor. Furthermore, because it has clinicopathologic characteristics similar to other skin adnexal tumors, it is often difficult for clinicians and pathologists to diagnose.

1.2. Case presentation: A 54-year-old man presented with a solitary erythematous plaque on his right thigh and initially was diagnosed with Bowen's disease by clinician. But the histologic finding was malignant tumor with intracytoplasmic lumina and ducts in background of extensive squamous differentiation. The ductal component was confirmed by CEA immunohistochemistry. Metastatic carcinoma was revealed in the inguinal lymph node. The final diagnosis was eccrine porocarcinoma.

1.3. Conclusion: Accurate diagnosis can have an impact on improving a patient's prognosis. Eccrine porocarcinoma needs more intensive treatment because its prognosis is worse than that of squamous cell carcinoma. We need to know the difference between other tumors and make a more accurate diagnosis.

2. Background

Eccrine porocarcinoma is a rare malignant tumor originating from the sweat glands, but most common sweat gland carcinoma. Since its first introduction in the 1960s, it has represented around 0.01% of all malignant cutaneous neoplasms [1-3].

The etiology of eccrine porocarcinoma is unknown. However, it can develop from the malignant transformation of pre-existing eccrine poroma [3]. Typically, eccrine porocarcinoma appears on the head and neck (40%) or lower extremities (34%) in the form of a mass or nodule [4]. It may be asymptomatic, but it can also show the common clinical manifestations of malignancy such as spontaneous bleeding, ulceration, itching, pain, and sudden growth [5]. Treatment for eccrine porocarcinoma includes surgery, chemotherapy, and radiation therapy. The initial treatment is the complete surgical excision and evaluation of nodal and distant metastasis [6-8]. Eccrine porocarcinoma has high recurrence and metastatic rates of 20%. Metastasis occurs mainly in the regional lymph nodes and the mortality rate for patients with node metastasis is 67%. Patients with distant metastasis have been reported to have a survival

period of five to 24 months [4,7,9,10]. As such, since eccrine porocarcinoma has an aggressive behavior, differential diagnosis is important for proper treatment. Because squamous metaplasia is a common feature of eccrine porocarcinoma, squamous cell carcinoma needs to be differentiated from other malignancies, as well as benign poroma tumors. We report a case of eccrine porocarcinoma with extensive squamous differentiation arising in the right thigh skin of a 54-year-old man.

3. Case presentation

A 54-year-old man visited the hospital because of a solitary erythematous plaque on his right thigh noticed three years earlier. The lesion grew in size despite medication and ointment application. His clinical diagnosis was Bowen's disease.

A piece of skin on the right thigh and soft tissue labeled "right inguinal lymph node" were submitted for evaluation. An ill-defined brownish and elevated lesion 6.5 x 5.5 x 0.4 cm was present. Histologically, the tumor was characterized by invasive squamous cell carcinoma showing intercellular bridges, keratinization, and keratin pearls. A pagetoid extension was identified. A small portion

of the tumor revealed nests of partially eosinophilic and clear cells with intracytoplasmic lumina and ducts.

Immunohistochemistry for epithelial membrane antigen (EMA), p63, BCL2(B-cell lymphoma 2), carcinoembryonic antigen (CEA), cluster of differentiation 117(CD117), and human melanoma black (HMB45), and Periodic acid-Schiff (PAS) special staining were performed and different parts of the tissue showed different expressions. The squamous component was positive for p63, whereas the ductal component was positive for CEA, CD117, and PAS. EMA was diffusely positive in both of the components.

A separate lymph node revealed metastatic carcinoma. Unlike the skin lesion, it only showed porocarcinoma with extensive comedo-necrosis without squamous differentiation.

Further assessments were conducted after the diagnosis. Positron emission tomography-computed tomography (PET-CT) and additional lymph node dissection were performed to detect metastasis to other organs. No metastasis was found in other organs or the 11 inguinal lymph nodes dissected. Six months have passed since the resection and there are no signs of recurrence.

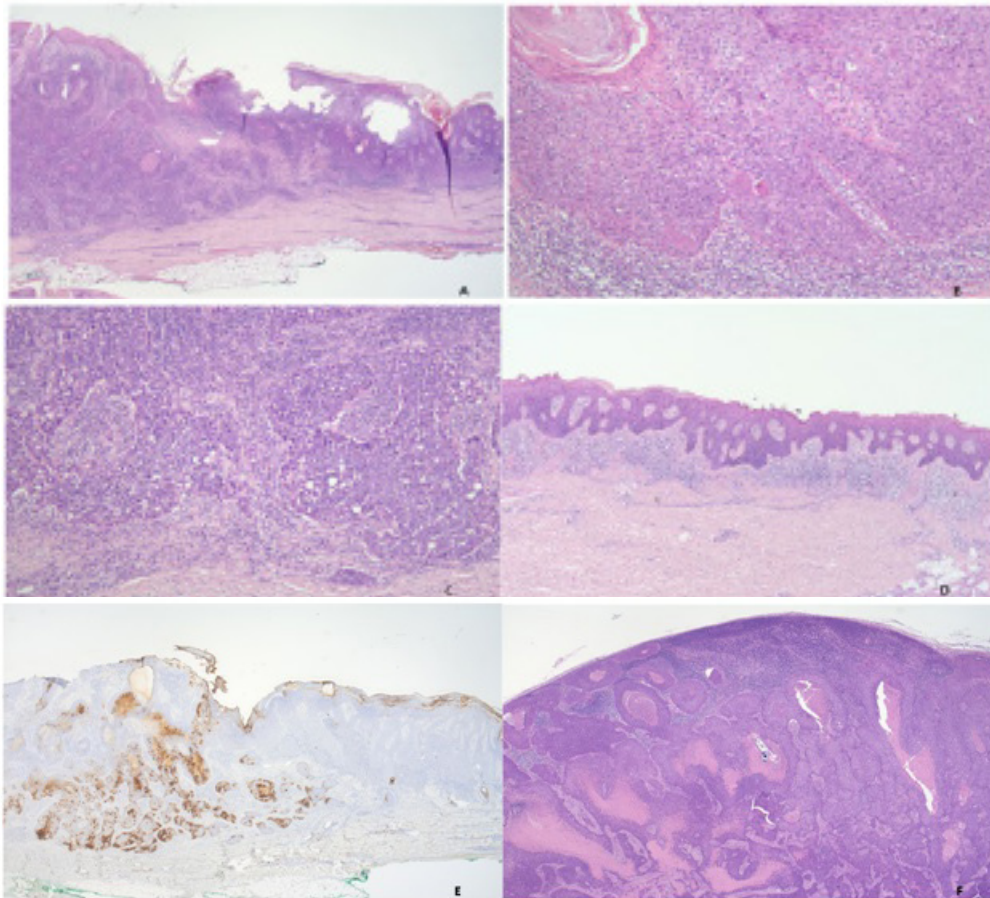


Figure 1: Various histological features of eccrine porocarcinoma. (A) Two distinct areas were observed at low magnification. At high magnification, (B) extensive squamous cell differentiation, (c) atypical nests of eosinophilic epithelioid cells with necrosis and focal duct formation, and (D) pagetoid spread are seen. (E) The ductal component was revealed by CEA immunohistochemistry. (F) It metastasized to lymph node is observed.

4. Discussion

Eccrine porocarcinoma is a rare malignancy of the skin but has variable clinical signs similar to other cutaneous tumors, so can be misdiagnosed as other benign or malignant tumors. In fact, clinicians most often mistake it for squamous cell carcinoma [11-13]. Also histologically, eccrine porocarcinoma resembles cutaneous squamous cell carcinoma, one of the differential diagnosis of eccrine porocarcinoma, because squamous metaplasia is a common finding in it, which is sometimes extensive [3,14,15]. Eccrine porocarcinoma tends to present aggressive behavior with a high risk of local recurrence and nodal and distant metastasis. It has a poorer prognosis compared to that of cutaneous squamous cell carcinoma. Most patients with squamous cell carcinoma have a favorable outcome after surgical resection. However, some have a high risk of local recurrence, distant metastasis, and mortality [16]. Therefore, an accurate diagnosis is required for proper treatment. Eccrine porocarcinoma shows histologic findings of irregularly shaped strands and nests of eosinophilic, epithelioid cells with varying degrees of cytologic atypia and nuclear pleomorphism. Duct formation is a prerequisite for the diagnosis and an important feature differentiating it from squamous cell carcinoma [3, 11]. It also shows extensive necrosis (comedo type or with cystic cavities) and increased mitotic activity in addition to an infiltrative border and cytological atypia. These malignant findings must be distinguished from benign eccrine poroma. Abundant clear cytoplasm and distinct cell borders, pagetoid extension resembling Paget's disease, and pigmentation can be observed [3,8,13]. Diseases to be discriminated due to these findings include sebaceous carcinoma, metastatic renal cell or other clear cell tumors, Paget's disease, and balloon cell melanoma.

Immunohistochemical and special stains may help in the differential diagnosis. Specifically, the identification of ductal differentiation by EMA, CEA, and PAS analysis is very useful. S-100 and Cytokeratin 19(CK19) may also be helpful markers distinguishing eccrine porocarcinoma from other tumors [8,10,13,14]. A study reported that CD117 (C-KIT) was useful for differentiating eccrine porocarcinoma from squamous cell carcinoma [17].

Proper treatment is related to good patient prognosis, which must be preceded by an accurate diagnosis. Pathologic diagnosis is difficult because eccrine porocarcinoma may show several histologic findings that can be observed in other tumors. If the tumor shows extensive squamous differentiation like this case, eccrine porocarcinoma can be difficult to distinguish from squamous cell carcinoma. It has an even worse prognosis than squamous cell carcinoma, so an accurate diagnosis considering the clinical features, histological findings, and auxiliary test results is necessary.

5. Acknowledgements

This research was supported by a 2-year Research Grant of Pusan National University. The funder of the study had no role in the

study design, data collection, data analysis, data interpretation, or writing of the manuscript.

References

1. Pinkus H, Mehregan AH. Epidermotropic eccrine carcinoma. A case combining features of eccrine poroma and paget's dermatosis. *Arch Dermatol.* 1963; 88: 597-606.
2. Mehregan AH, Hashimoto K, Rahbari H. Eccrine adenocarcinoma. A clinicopathologic study of 35 cases. *Arch Dermatol.* 1983; 119: 104-114.
3. Robson A, Greene J, Ansari N, Kim B, Seed PT, McKee PH, et al. Eccrine porocarcinoma (malignant eccrine poroma): a clinicopathologic study of 69 cases. *Am J Surg Pathol.* 2001; 25: 710-720.
4. Salih AM, Kakamad FH, Baba HO, Salih RQ, Hawbash MR, Mohammed SH, et al. Porocarcinoma; presentation and management, a meta-analysis of 453 cases. *Ann Med Surg (Lond).* 2017; 20: 74-79.
5. Tolkachjov SN, Hocker TL, Camilleri MJ, Baum CL. Treatment of porocarcinoma with Mohs micrographic surgery: the Mayo Clinic experience. *Dermatol Surg.* 2016; 42: 745-750.
6. Mahomed F, Blok J, Grayson W. The squamous variant of eccrine porocarcinoma: a clinicopathological study of 21 cases. *J Clin Pathol.* 2008; 61: 361-365.
7. Song SS, Wu Lee W, Hamman MS, Jiang SI. Mohs micrographic surgery for eccrine porocarcinoma: an update and review of the literature. *Dermatol Surg.* 2015; 41: 301-306.
8. Nguyen SL, Stefan J, David TL, Stefan G, Muhammad F, Johannes P, et al. Eccrine porocarcinoma of the head and neck: Meta-analysis of 120 cases. *Head Neck.* 2020; 42(9): 2644-2659.
9. Cowden A, Dans M, Militello G, Junkins-Hopkins J, Voorhees ASV. Eccrine porocarcinoma arising in two African American patients: distinct presentations both treated with Mohs micrographic surgery. *Int J Dermatol.* 2006; 45: 146-50.
10. Nazemi A, Higgins S, Swift R, In G, Miller K, Wysong A. Eccrine porocarcinoma: new insights and a systematic review of the literature. *Dermatol Surg.* 2018; 44: 1247-1261.
11. Gerber PA, Schulte KW, Ruzicka T, Bruch-Gerharz D. Eccrine porocarcinoma of the head: an important differential diagnosis in the elderly patient. *Dermatology.* 2008; 216: 229-233.
12. Nguyen A, Nguyen AV. Eccrine porocarcinoma: a report of 2 cases and review of the literature. *Cutis.* 2014; 93: 43-46.
13. HJ Kim, AN Kim, KC Moon, SH Seo, IH Kim, AR Kim, et al. Eccrine Porocarcinoma: A Multicenter Retrospective Study with Review of the Literatures Reported in Korea. *Ann Dermatol.* 2020; 32(3): 223-229.
14. Mahalingam M, Richards JE, Selim MA, Muzikansky A, Hoang MP. An immunohistochemical comparison of cytokeratin 7, cytokeratin 15, cytokeratin 19, CAM 5.2, carcinoembryonic antigen, and nestin in differentiating porocarcinoma from squamous cell carcinoma. *Hum Pathol.* 2012; 43: 1265-1272.
15. Mahomed F, Blok J, Grayson W. The squamous variant of eccrine porocarcinoma: A clinicopathological study of 21 cases. *J clin*

- pathol. 2008; 61(3): 361-5.
16. Waldman A, Schmults C. Cutaneous Squamous Cell Carcinoma. *Hematol Oncol Clin North Am.* 2019; 33: 1.
 17. Goto K, Takai T, Fukumoto T, Anan T, Kimura T, Ansai SI, et al. CD117 (KIT) is a useful immunohistochemical marker for differentiating porocarcinoma from squamous cell carcinoma. *J Cutan Pathol.* 2016; 43(3): 219-26.